

**TIER 1**  
**1,500 POINTS**



**aveda**  
comforting  
tea bags



**two hand relief™**  
moisturizing creme  
travel size set (40 ml)



**rosemary mint**  
purifying shampoo (50 ml)  
weightless conditioner (50 ml)  
travel set



**shampure™**  
nurturing shampoo (50 ml)  
nurturing conditioner (50 ml)  
travel set

**TIER 2**  
**2,500 POINTS**



**aveda**  
wooden mini  
paddle brush



**shampure™**  
hand and body wash  
(250 ml)



**botanical kinetics™**  
purifying gel cleanser  
(150 ml)



**botanical kinetics™**  
purifying creme cleanser  
(150 ml)



**stress-fix™**  
concentrate  
(7 ml)



**be curly™**  
curl enhancer  
(200 ml)

**TIER 3**  
**4,000 POINTS**



**botanical repair™**  
intensive  
strengthening  
masque: light  
(150 ml)



**botanical repair™**  
bond-building styling  
creme  
(150 ml)



**invati advanced™**  
thickening foam  
(150 ml)



**invati advanced™**  
intensive hair and scalp  
masque  
(150 ml)



**invati advanced™**  
mini system light  
exfoliating shampoo light  
(50 ml) thickening  
conditioner (40 ml)  
scalp revitalizer (30 ml)



**invati advanced™**  
mini system rich  
exfoliating shampoo rich  
(50 ml) thickening  
conditioner (40 ml)  
scalp revitalizer (30 ml)



**nutriplenish™**  
treatment masque  
light moisture  
(150 ml)



**nutriplenish™**  
styling treatment  
foam  
(200 ml)



**nutriplenish™**  
curl gelée  
(200 ml)



**shampowder™**  
dry shampoo  
(56g)



**aveda men**  
**pure-formance™**  
dual action aftershave  
(75 ml)



**aveda**  
wooden  
paddle  
brush



**stress-fix™**  
body lotion  
(200 ml)



**stress-fix™**  
body creme  
(200 ml)



**speed of light™**  
blow dry  
accelerator spray  
(200 ml)



**air control™**  
light hold  
hair spray  
(258 g)



**shampure™**  
vegan soy  
wax candle



**rosemary mint**  
vegan soy  
wax candle



**smooth infusion™**  
perfect blow dry  
(200 ml)

**TIER 4**  
**7,000 POINTS**



**botanical repair™**  
strengthening shampoo  
(200 ml)  
strengthening  
conditioner  
(200ml)



**botanical repair™**  
intensive  
strengthening  
masque: rich  
(200ml)



**invati brow™**  
thickening  
serum  
(5 ml)



**nutriplenish™**  
treatment  
masque  
deep moisture  
(200 ml)



**nurture your hands and feet:**  
hand relief™ night renew  
serum (45 ml)  
hand relief™ moisturizing  
creme (125 ml)  
foot relief™ moisturizing  
creme (125 ml)



**botanical kinetics™:**  
purifying gel  
cleanser (150 ml)  
soft hydrating  
creme (50 ml)



**botanical kinetics™:**  
purifying gel  
cleanser (150 ml)  
rich hydrating  
creme (50 ml)



**styling duo set**  
air control™  
light hold  
hairspray (258 g)  
phomollient™  
styling foam  
(200 ml)



**ritual of relief:**  
hand relief™  
moisturizing creme (40 ml)  
foot relief™  
moisturizing creme (125 ml)  
hand relief™  
moisturizing creme (125 ml)



**sap moss™**  
weightless hydration  
shampoo (200 ml)  
weightless hydration  
conditioner (200 ml)



**aveda men  
pure-formance™**  
shave cream  
(150 ml)  
aftershave  
(75 ml)



**smooth infusion™**  
anti-frizz shampoo  
(200 ml)  
anti-frizz conditioner  
(200 ml)



**invati advanced™**  
exfoliating shampoo  
light (200 ml)  
thickening  
conditioner (200 ml)



**invati advanced™**  
exfoliating shampoo  
rich (200 ml)  
thickening  
conditioner (200 ml)



**cherry almond haircare set**  
cherry almond softening  
shampoo (250 ml)  
cherry almond softening  
conditioner (200 ml)  
aveda wooden  
paddle brush



**rosemary mint haircare set**  
rosemary mint purifying  
shampoo (250 ml)  
rosemary mint weightless  
conditioner (250 ml)  
aveda wooden  
paddle brush



**shampure™ haircare set**  
shampure™ nurturing  
shampoo (250 ml)  
shampure™ nurturing  
conditioner (250 ml)  
aveda wooden  
paddle brush



**cherry  
almond**  
hand and  
body wash  
(1 litre)



**rosemary  
mint**  
hand and  
body wash  
(1 litre)



**shampure™**  
hand and  
body wash  
(1 litre)



**nutriplenish™**  
shampoo light  
moisture (250 ml)  
conditioner light  
moisture (250 ml)



**nutriplenish™**  
shampoo deep  
moisture (250 ml)  
conditioner deep  
moisture (250 ml)

**TIER 5**  
**10,000 POINTS**



**blow dry essentials**  
speed of light™  
(200 ml)  
aveda wooden mini  
paddle brush  
air control™ light hold  
hairspray (258 g)



**invati men™ system:**  
nourishing exfoliating  
shampoo (250 ml)  
scalp revitalizer  
(125 ml)



**take a retreat from stress:**  
stress-fix™ concentrate (7 ml)  
stress-fix™ body lotion (200 ml)  
stress-fix™ soaking salts (454 g)  
stress-fix™ composition oil™  
(50 ml)



**smooth infusion  
anti frizz set**  
anti-frizz shampoo  
(200 ml)  
anti-frizz conditioner  
(200 ml)  
perfect blow dry  
(200 ml)



**3-piece chakra set:  
grounded, nourished,  
intention**  
chakra™ 1-3  
balancing pure-  
fume™ mists  
(100 ml)



**3-piece chakra set:  
harmony, insight,  
wisdom**  
chakra™ 4, 6, &  
7 balancing pure-  
fume™ mists  
(100 ml)



**shampure™ head to toe:**  
shampure™ body  
wash (250 ml)  
shampure™ body  
lotion (200 ml)  
shampure™ vegan  
soy wax candle  
shampure™  
composition oil™  
(50 ml)



**calm your senses  
shampure™ set:**  
shampure™ hand and  
body wash (250 ml)  
shampure™ body lotion  
(200 ml)  
shampure™ vegan soy  
wax candle



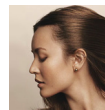
**rosemary mint lover:**  
rosemary mint bath bar (200 g)  
rosemary mint purifying  
shampoo (250ml)  
rosemary mint weightless  
conditioner (250 ml)  
rosemary mint vegan  
soy wax candle



**take control styling set:**  
control paste™(75 ml)  
air control™ light hold  
hairspray (258 g)  
control force™ firm  
hold hairspray  
(258 g)



**botanical  
kinetics™  
serum duo**  
pore  
refiner (30 ml)  
intense  
hydrator (30 ml)



**\$50 aveda  
salon/spa  
certificate**  
redeemable  
online

**TIER 6**  
**20,000 POINTS**



**Full set of chakra™  
balancing body mist:**  
chakra 1–7 balancing  
pure-fume™ mist  
(each 100 ml)



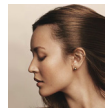
**shampure™ litre duo:**  
shampure™ nurturing  
shampoo (1 litre)  
shampure™ nurturing  
conditioner (1 litre)



**rosemary mint litre duo:**  
rosemary mint  
purifying shampoo  
(1 litre)  
rosemary mint  
weightless conditioner  
(1 litre)



**cherry almond litre duo:**  
cherry almond  
softening shampoo  
(1 litre)  
cherry almond  
softening conditioner  
(1 litre)



**\$100 aveda  
salon/spa  
certificate**  
redeemable  
online